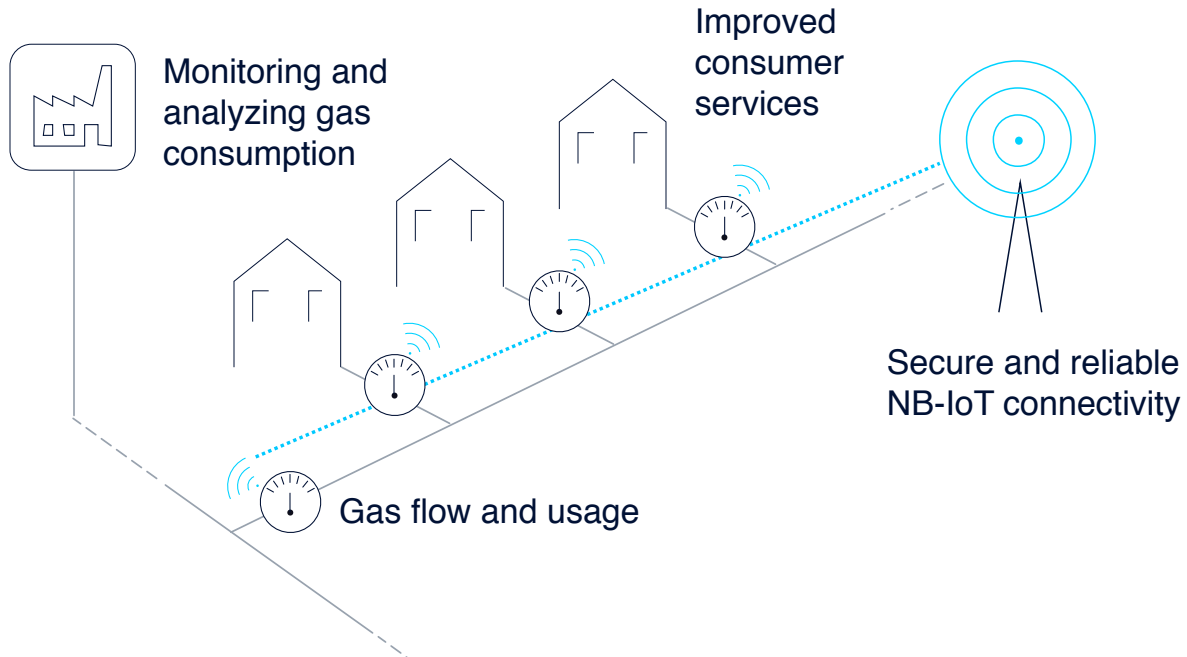
An aerial photograph of a residential neighborhood in winter. The ground is covered in a thick layer of snow. Several houses with red siding and white roofs are scattered throughout the scene. Evergreen trees are interspersed among the houses. A road or driveway is visible, partially covered in snow. The overall atmosphere is cold and serene.

Smart utility metering with NB-IoT

Smart metering improves utility efficiency and services



Partners and roles

NOKIA

Telit

Shitek
TECHNOLOGY



Low power deep coverage NB-IoT connectivity over existing LTE infrastructure

NB-IoT module integrated into smart gas meter

Smart gas meter

Power efficient NB-IoT chipset embedded into NB-IoT module

Smart utility metering demo setup

Shitek gas meter



Telit module with Intel chipset
designed for NB-IoT

NB-IoT connectivity

Nokia end-to-end
LTE network with
NB-IoT on
eNodeB



Cloud application
for remote gas
meter monitoring



Why NB-IoT for smart metering

End-to-end demo based on a commercially available technology standardized by 3GPP

Low cost connectivity solution for massive numbers of devices requiring wide area coverage

Features matching the needs:

- Deep indoor coverage
- Low battery usage
- Secure, scalable and easy to deploy.

An actively collaborating ecosystem provides a strong foundation for fulfilling market needs.

NOKIA